

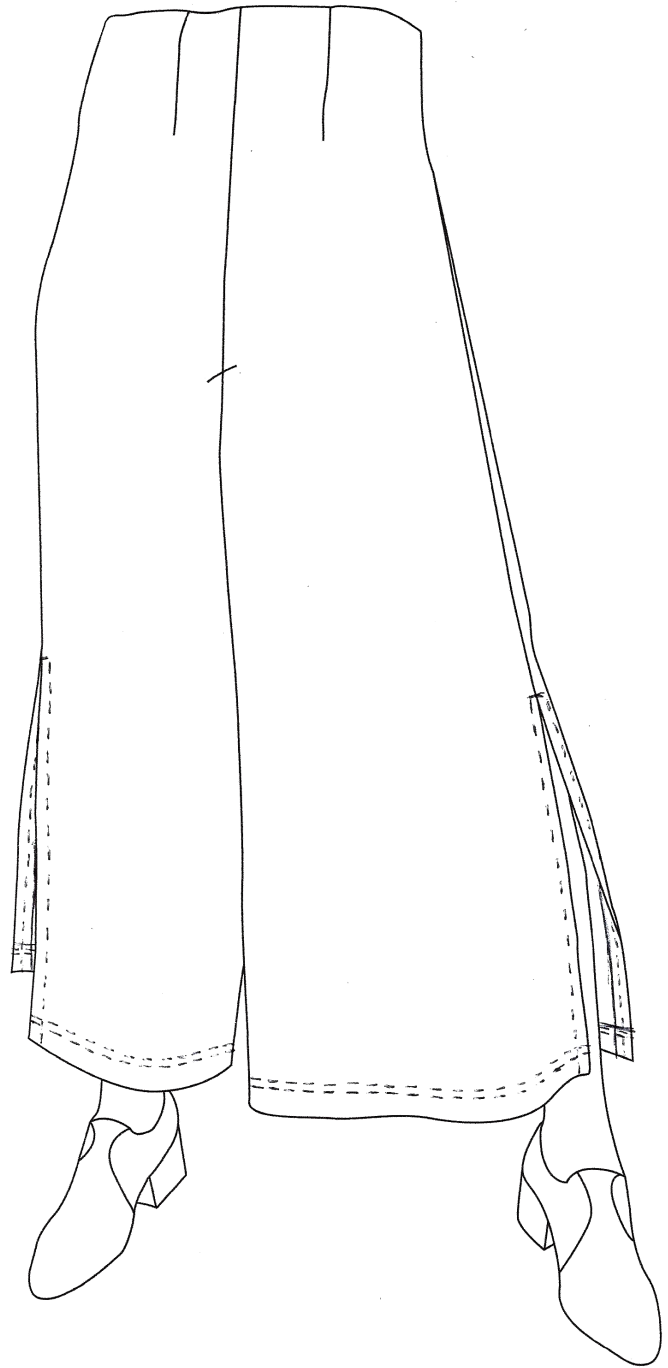


Pamela's
Closet, Inc.

Wardrobe Essentials

Fancy
Pantz

#807

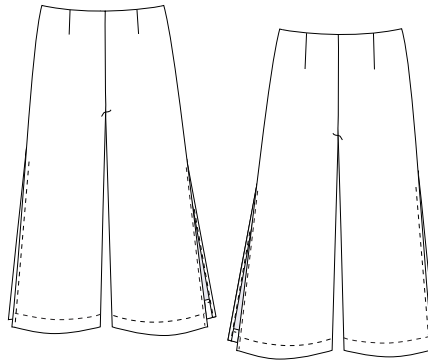


Group A: Hip Sizes 36-38-40-42
Group B: Hip Sizes 42-44-46-48
Group C: Hip Sizes 48-51-54-57

Ellie Oser



Fancy Pantz #807



ABOUT THIS PATTERN:

Fancy Pantz are a sophisticated update to the Classic Coulotte. They have a comfortable casing-free elastic waist with darts, side splits and a slimming silhouette.

For a relaxed fit choose the size closest to your hip measurement. For a more snug fit go down one size. (If your fabric doesn't have at least 30% stretch you may need to go up a size.)

Size	6	8	10	12	14	16	18	20	22	24	
Hip	36	38	40	42	44	46	48	51	54	57	inches
60" (150 cm) wide fabric	2 ¼	2 ½	2 ½	2 ½	2 ¾	2 ¾	2 ¾	3	3	3	yards
Garment Measurement at Waist	29	31	33	35	37	39	41	44	47	50	inches
Garment Measurement at Hip	36	38	40	42	44	46	48	51	54	57	inches
Finished Length at Side Seam	33 ¼	33 ½	33 ¾	34	34 ¼	34 ½	34 ¾	35	35 ¼	35 ½	inches
Finished Hem Width	34 ¼	35 ¼	36 ¼	37 ¼	38 ¼	39 ¼	40 ½	42	43 ¾	45 ½	inches

Fancy Pantz are designed for Stable Knits with good recovery, and at least 30% - 40% width-wise stretch. Suggested fabrics include: Matte Jersey, medium weight Rayon blend Ponte knits, Stretch Velour (stretch velvet), and stretch woven fabrics such as "Matte Hybrid" (available from Emma One Sock—NAYY). Allow extra fabric to match plaids, prints or stripes.

Notions: Thread to match fabric, 1 ½" - 2" wide non-roll elastic

Concept, design and production: Pamela W. Howard. Content Editor: Paula W. Braxton
 Technical drawing and layout: Jennifer Stern Hasemann